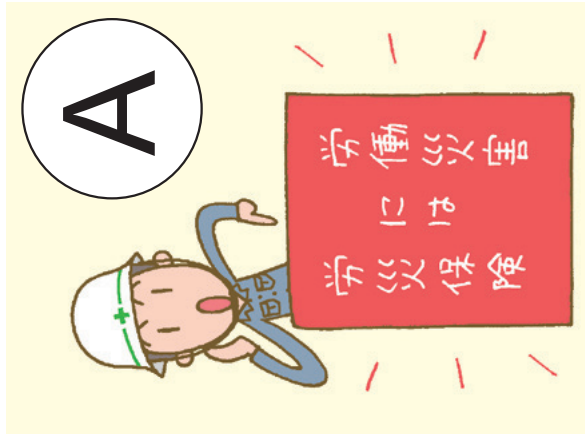
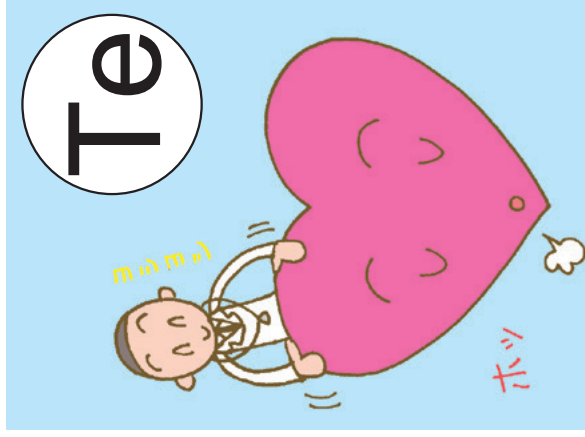


MHLW Karuta



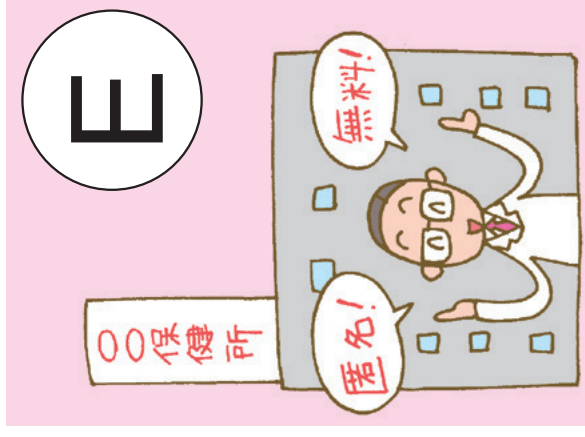
A

Workers' accident compensation insurance allows you to work without anxieties.



Te

Through support is necessary for mental health care at workplace.



E

You can take HIV test at the health center for free and anonymously.



Ko

When you are in trouble, the housing allowance is offered to help pay the rent.

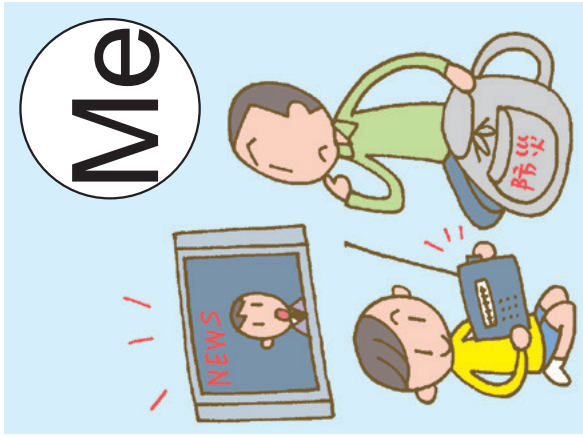
A

Te

E

Ko

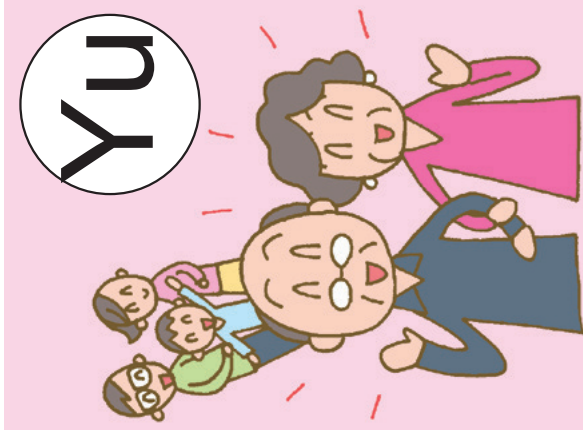
MHLW Karuta 10



Me

Me

Don't be confused
but stay calm in a
crisis!



Yu

Yu

The system to
secure life after
retirement without
anxieties
~the public pension programs~



Ki

ki

Nonsmoking is the
first step for your
good health

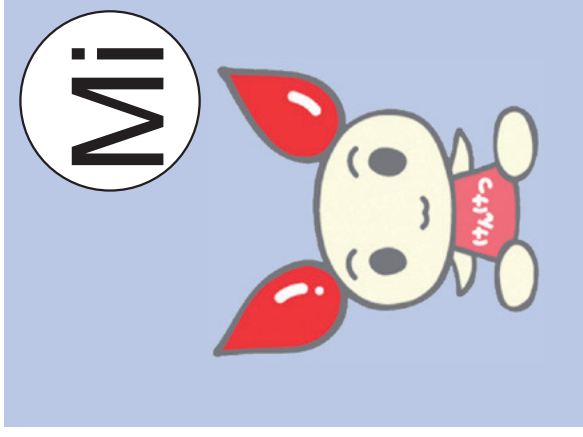


Sa

Sa

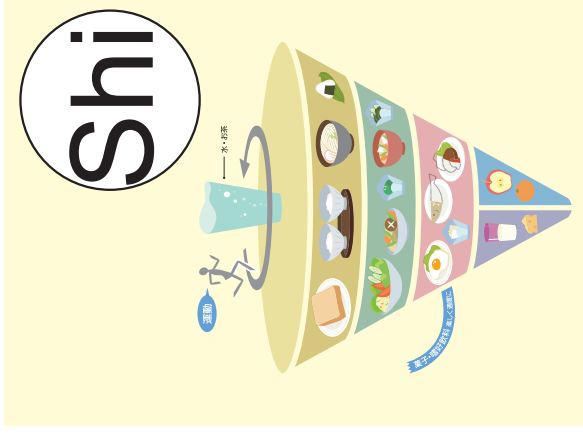
Don't forget to
check insurance
enrollment for the
employment sche-
duled for over 31
days.
~The Employment Insurance
Program~

MHLW Karuta 11



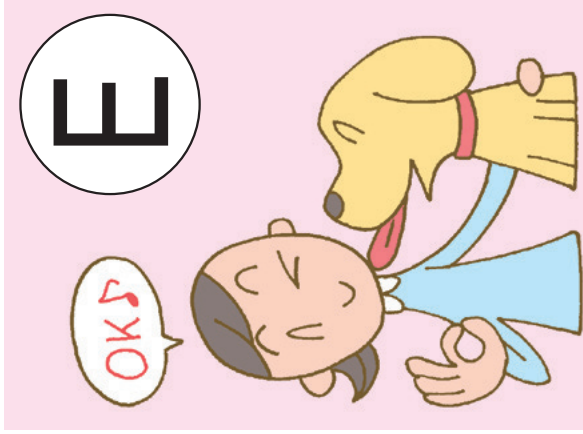
Mi

Blood donation is essential for our future and can be made by those aged 16 and above.



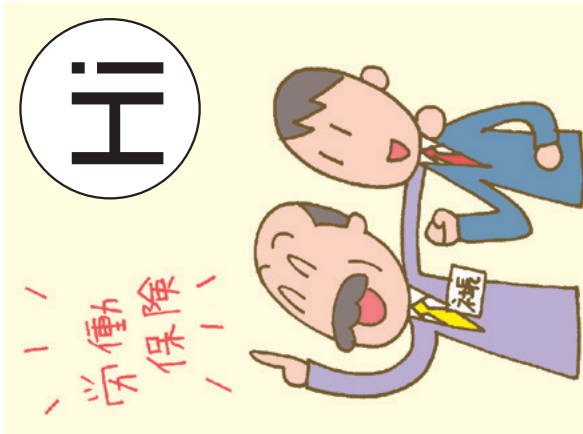
Shi

Eat well balanced meals.
~ Japanese Food Guide Spinning Top~



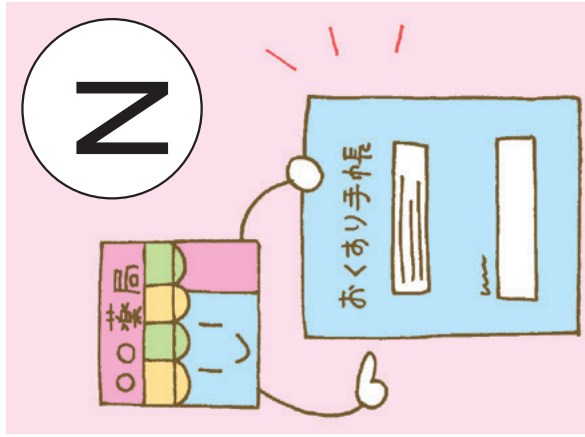
E

We welcome assistance dogs with smile.



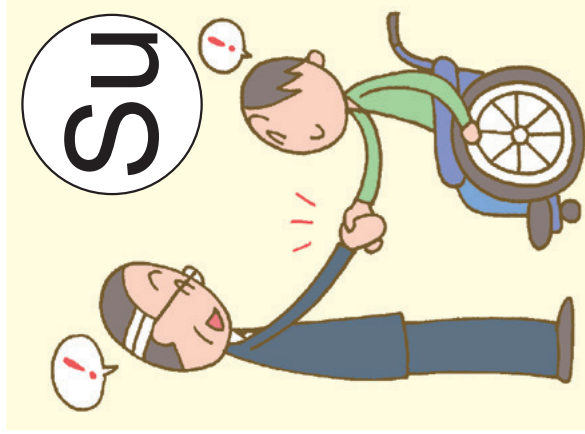
Hi

Join the labour insurance if you employ at least one worker!



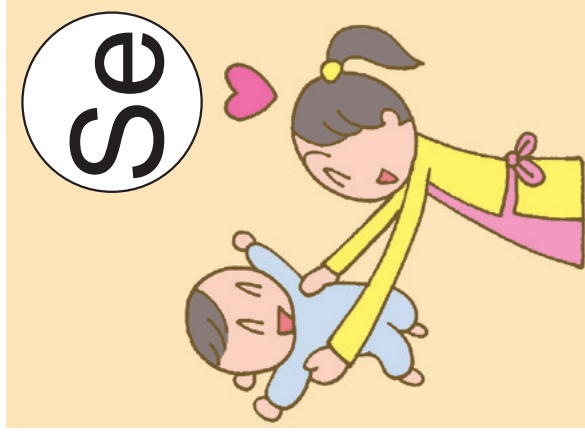
N

Don't forget to bring your "Medication Notebook" with you to the pharmacy for everyone!



Su

Let's aim at all the companies' achieving the employment quota system for persons with disabilities!



Se

Childcare mother is another option you can choose along with daycare center.



Mo

Let's promote Positive Action to utilize more women's abilities!

Mo