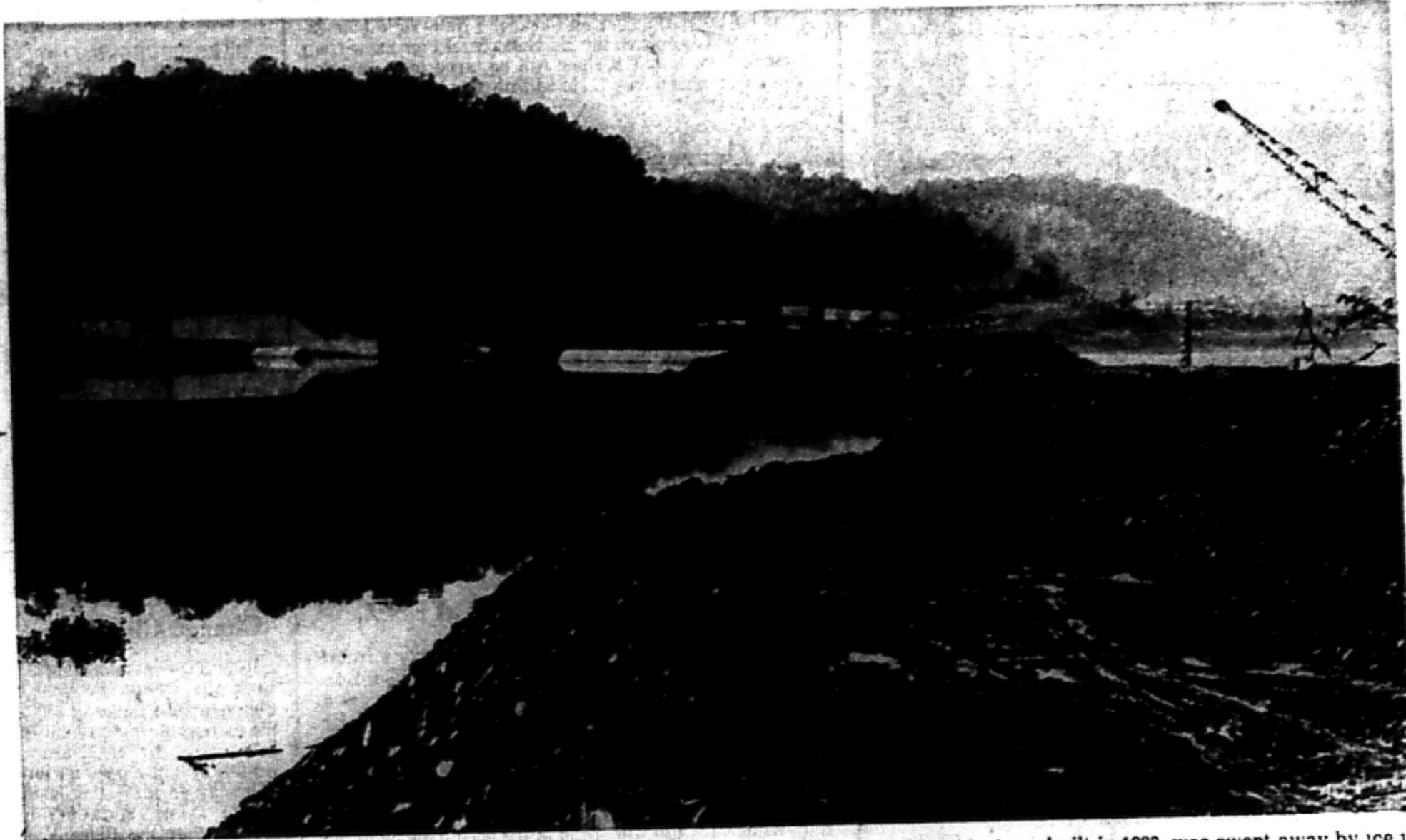


that area.



MOVING CLOSER — The two ends of the new Chain Dam (upper left center) on the Lehigh River near Glendon are inching together as work nears completion. The \$1.3 million dam is expected to be holding water in the fall and provide a recreational pool that was depleted when the

old rock-and-timber structure, built in 1828, was swept away by ice in 1965. The new dam will be 700 feet wide. It is a project of the state Department of Environmental Resources.

—Express Photo by Blake Carter